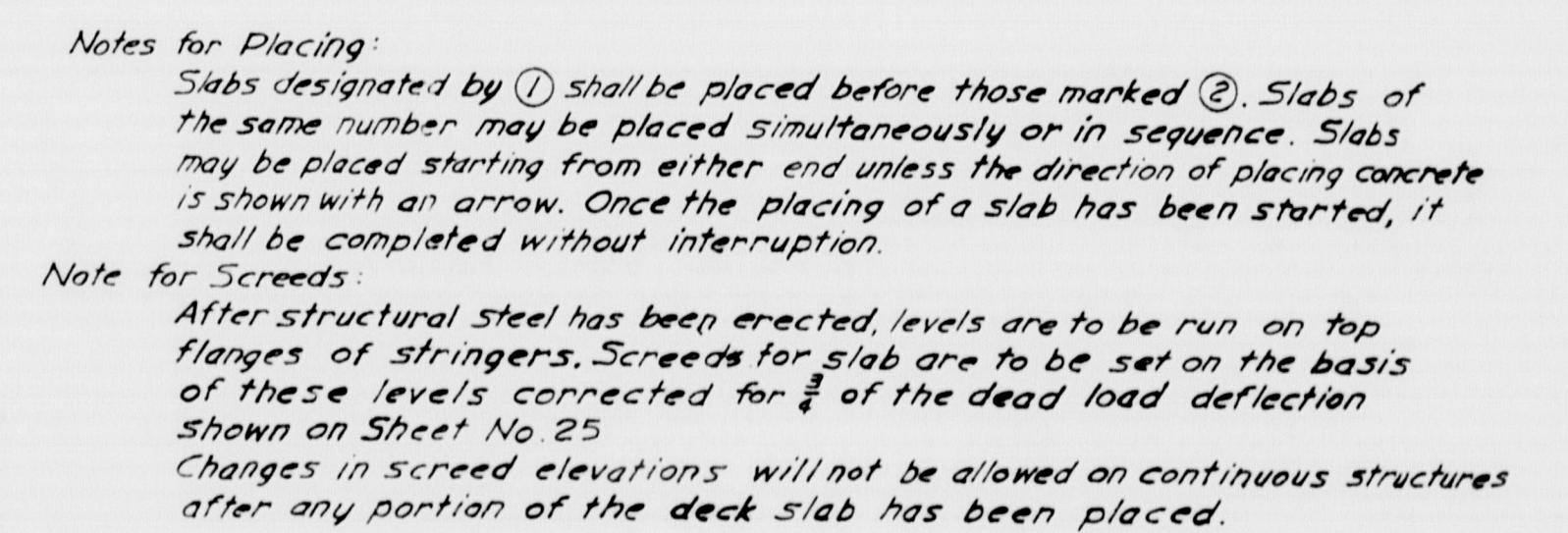
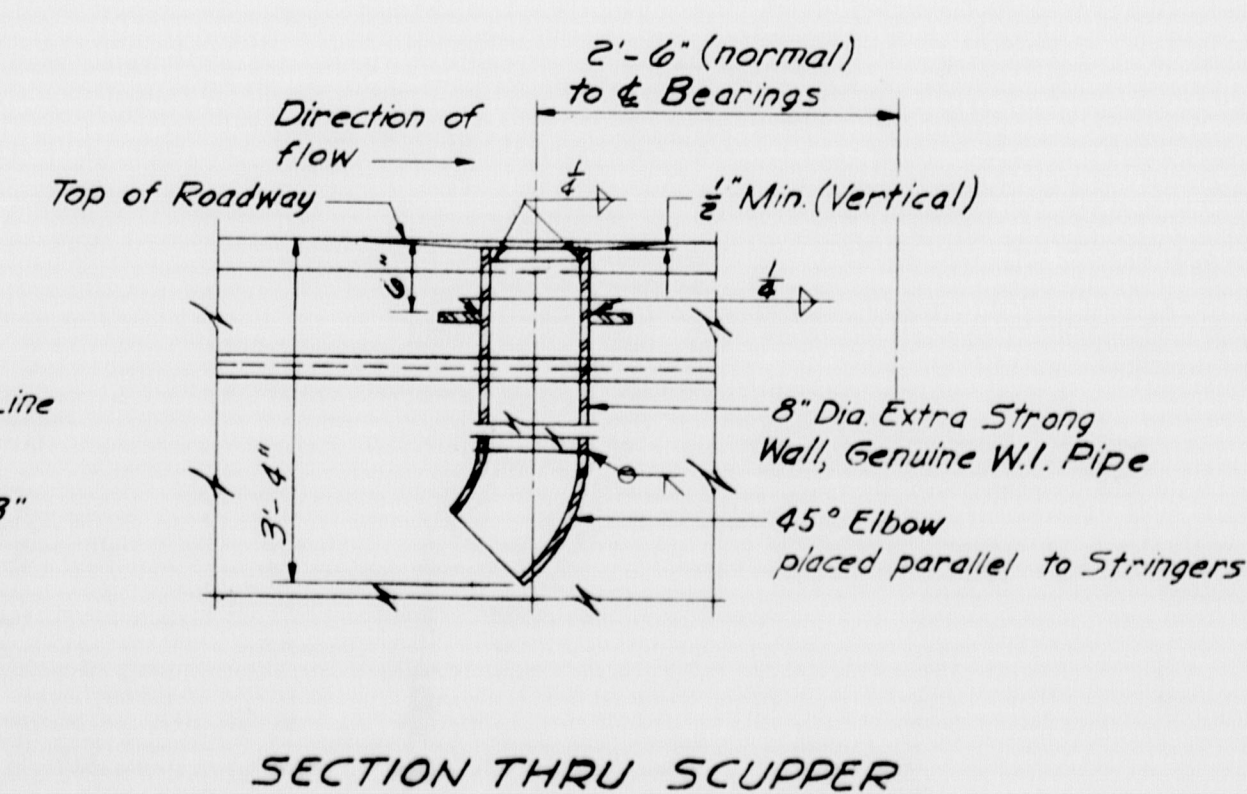
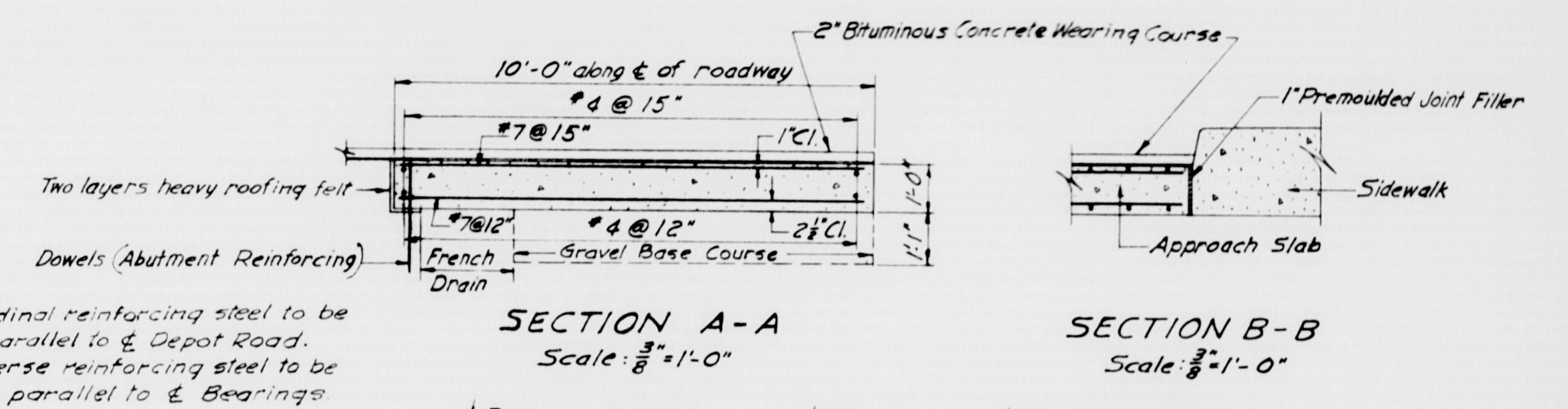
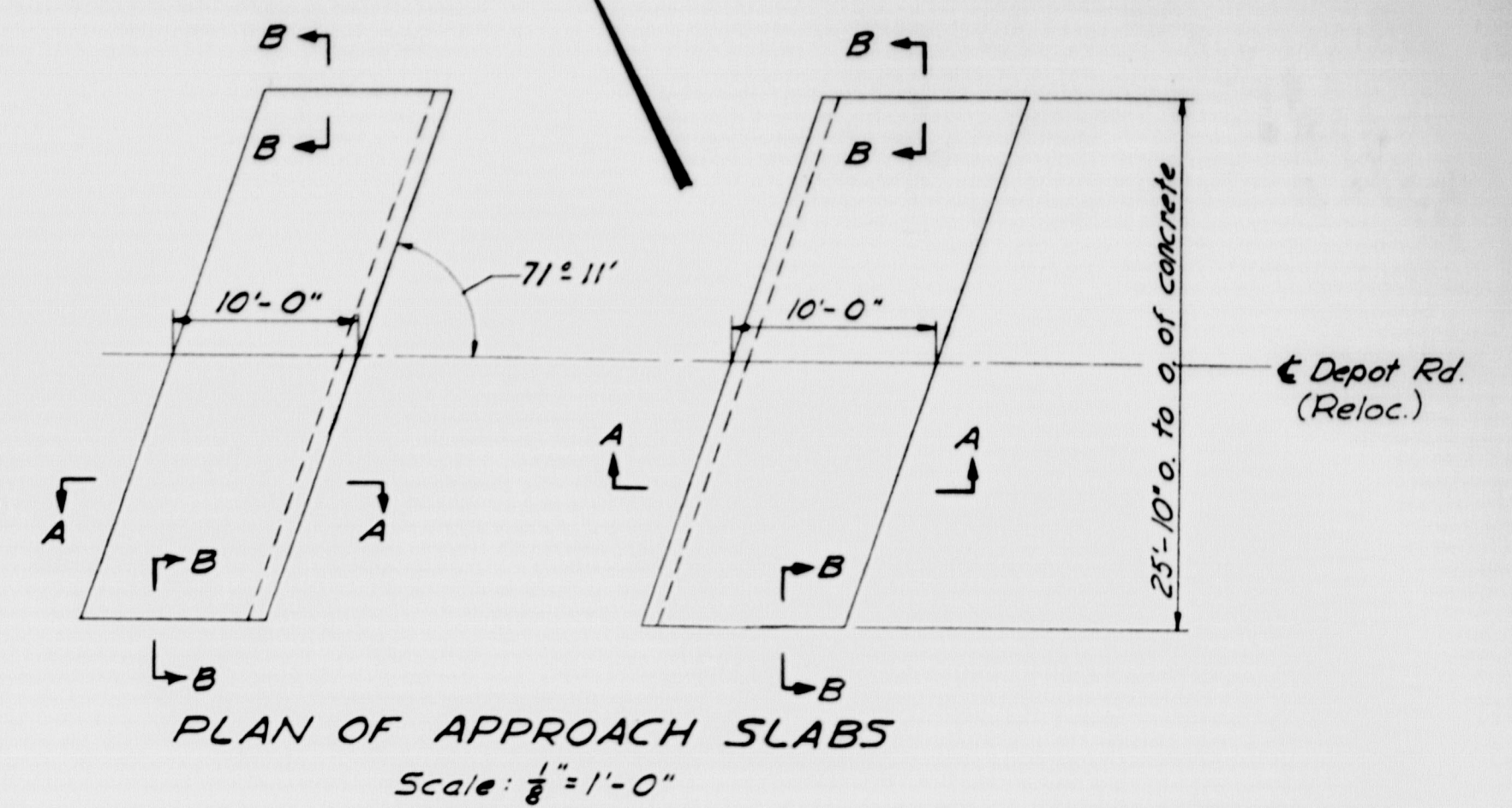
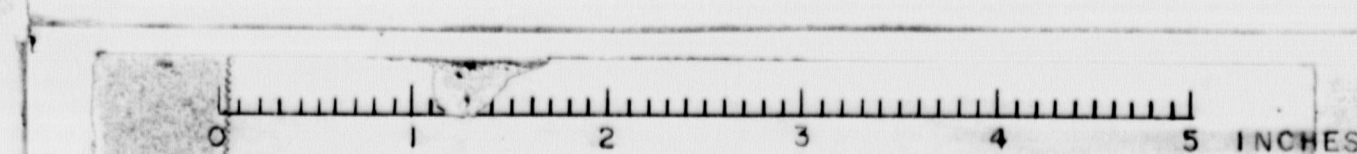


FALMOUTH

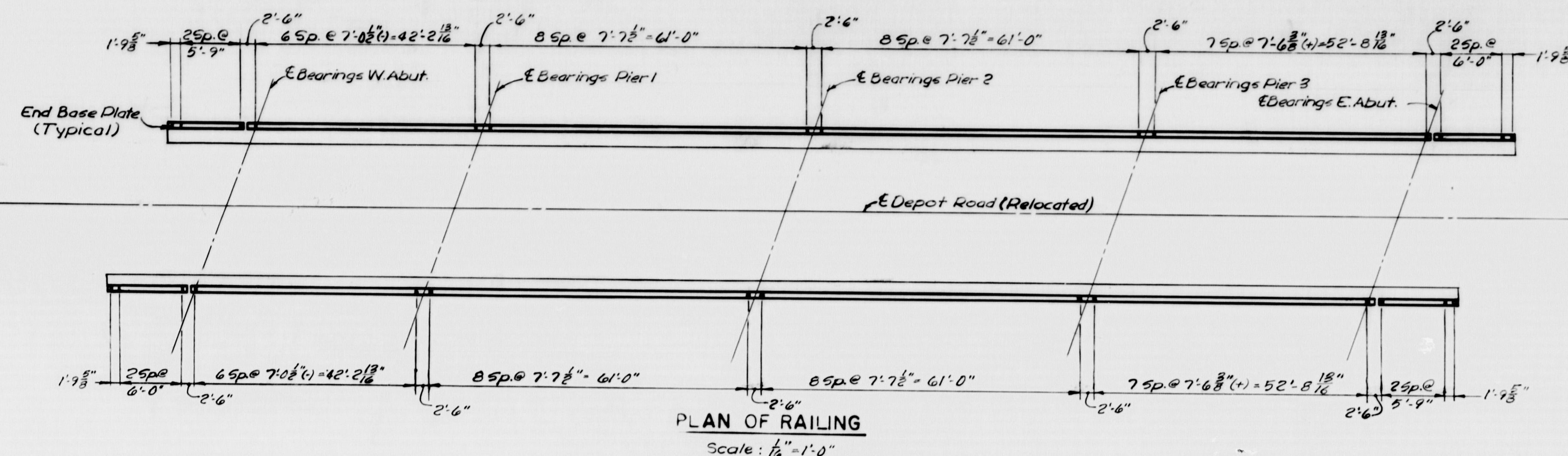


M-1305 FAY, SPOFFORD & THORNDIKE, INC. Qm-14
ENGINEERS BOSTON, MASS. 369

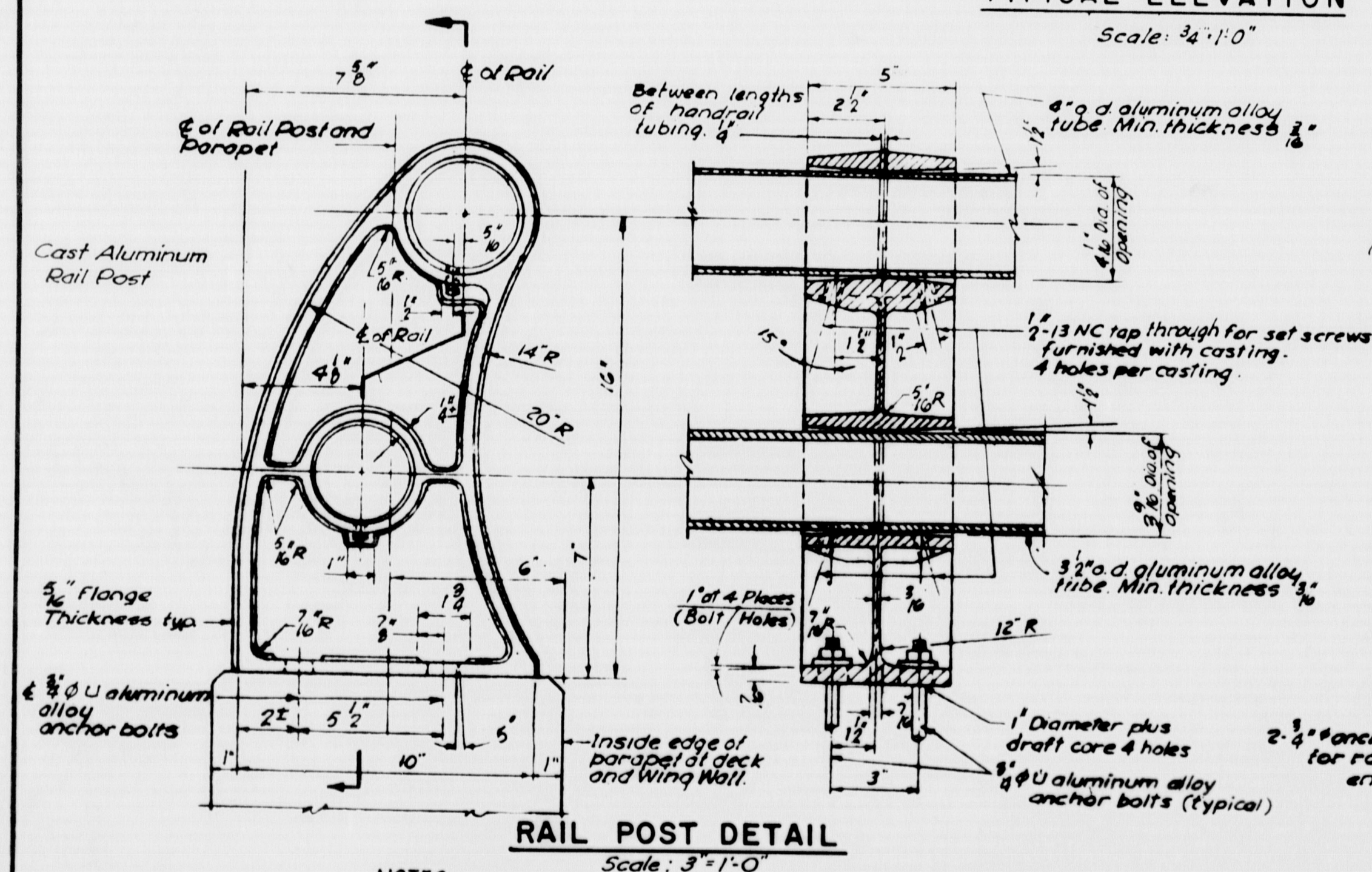
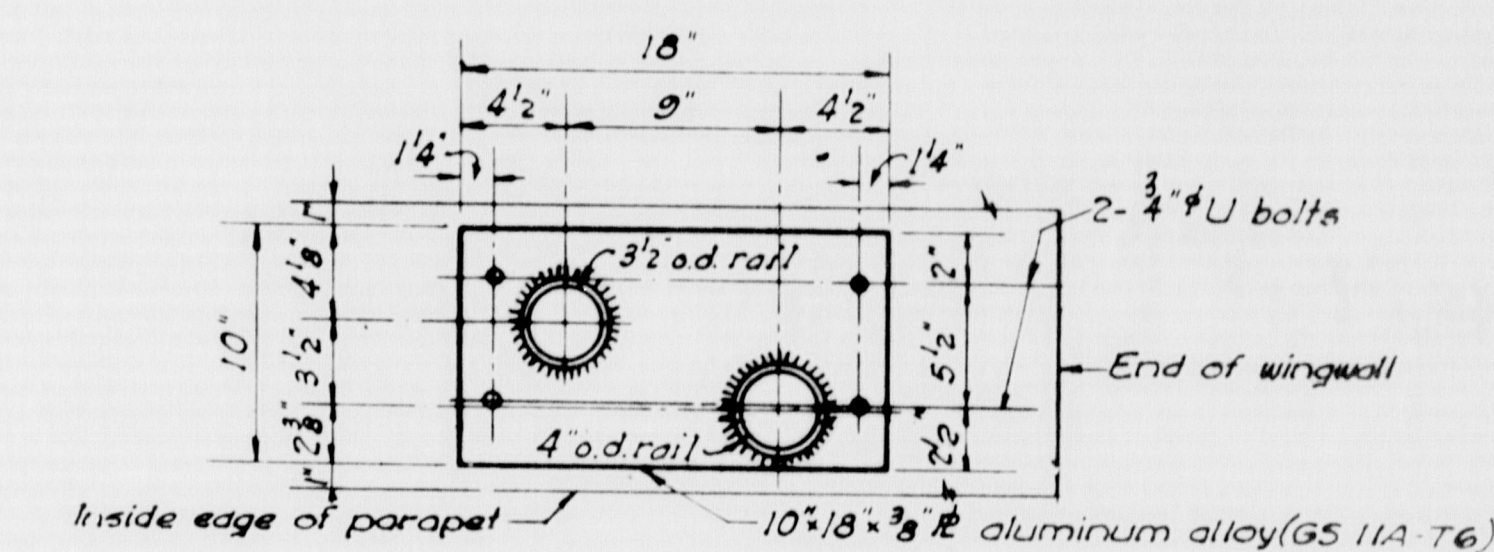
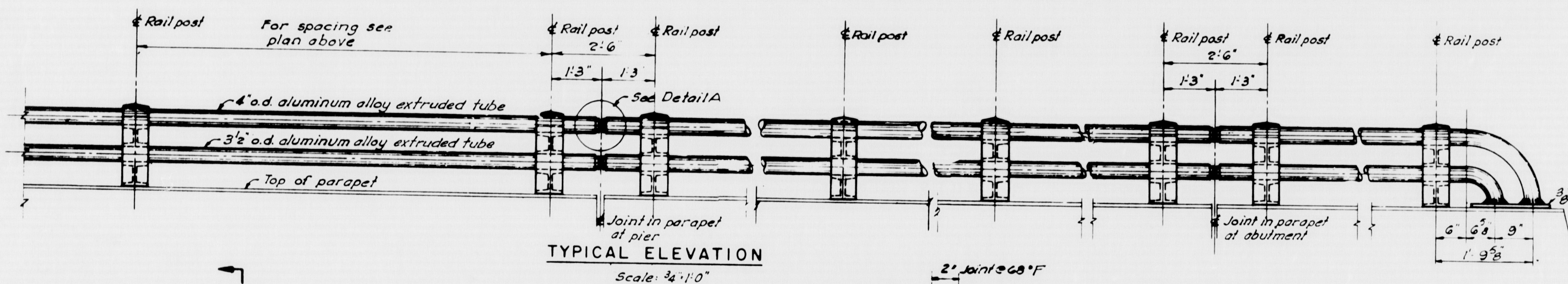


S. R. R.	STATE	FED. AID	SHEET	TOTAL
NO.	NO.	NO.	NO.	SHEETS
1	MAINE	2-295-300	27	50

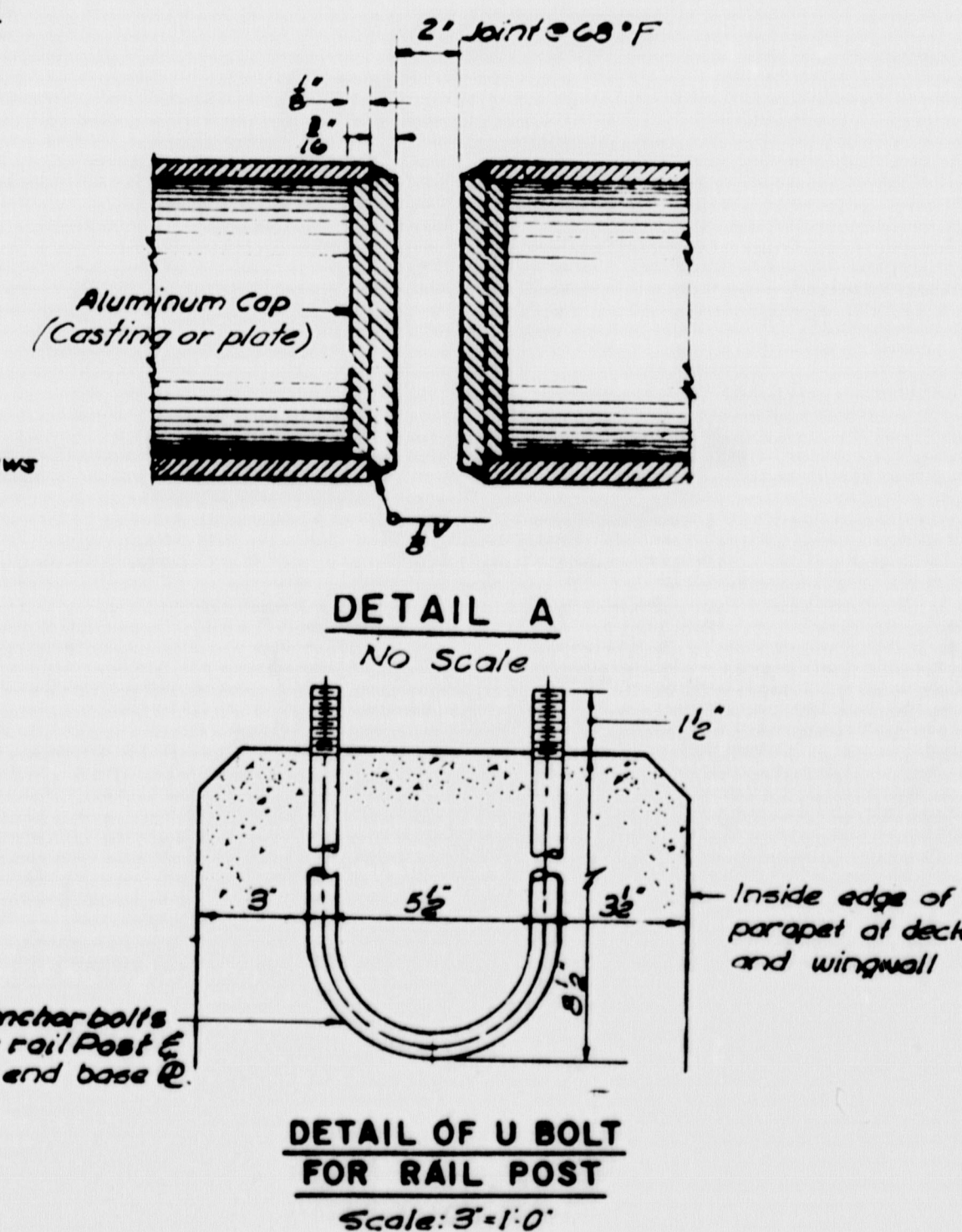
FALMOUTH



Note: All dimensions shown on plan are horizontal.



- NOTES:
1. The bottom of each railing post shall be thoroughly coated with an aluminum impregnated caulking compound before installation.
 2. Railing post to be set normal to parapet.



DETAIL OF U BOLT FOR RAIL POST
Scale: 3/4" = 1'-0"

AS BUILT - NO REVISION

STATE HIGHWAY COMMISSION
AUGUSTA, MAINE

PORTLAND-YARMOUTH INTERSTATE

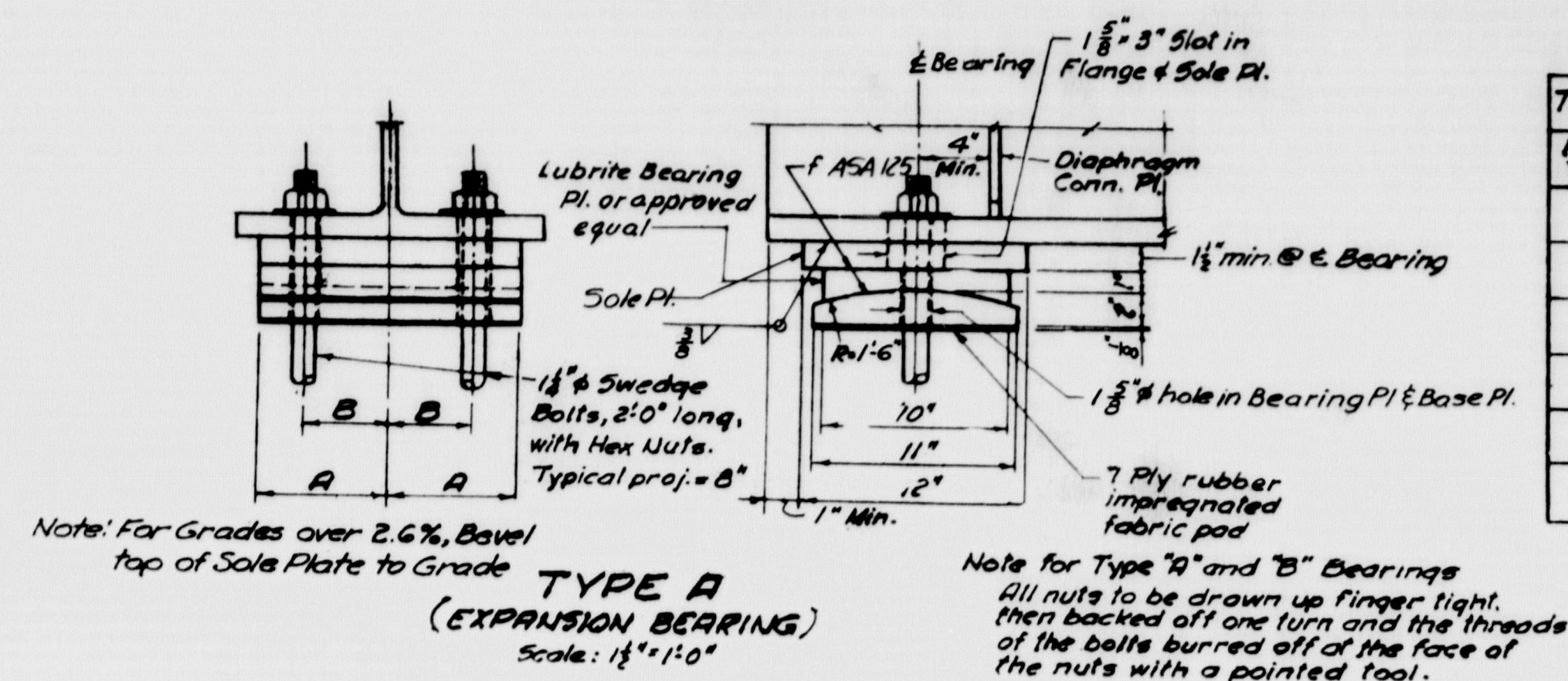
DEPOT ROAD RELOCATED OVER INTERSTATE
STANDARD RAILING DETAILS

SHEET NO. 27 OF 50 SCALE: AS NOTED

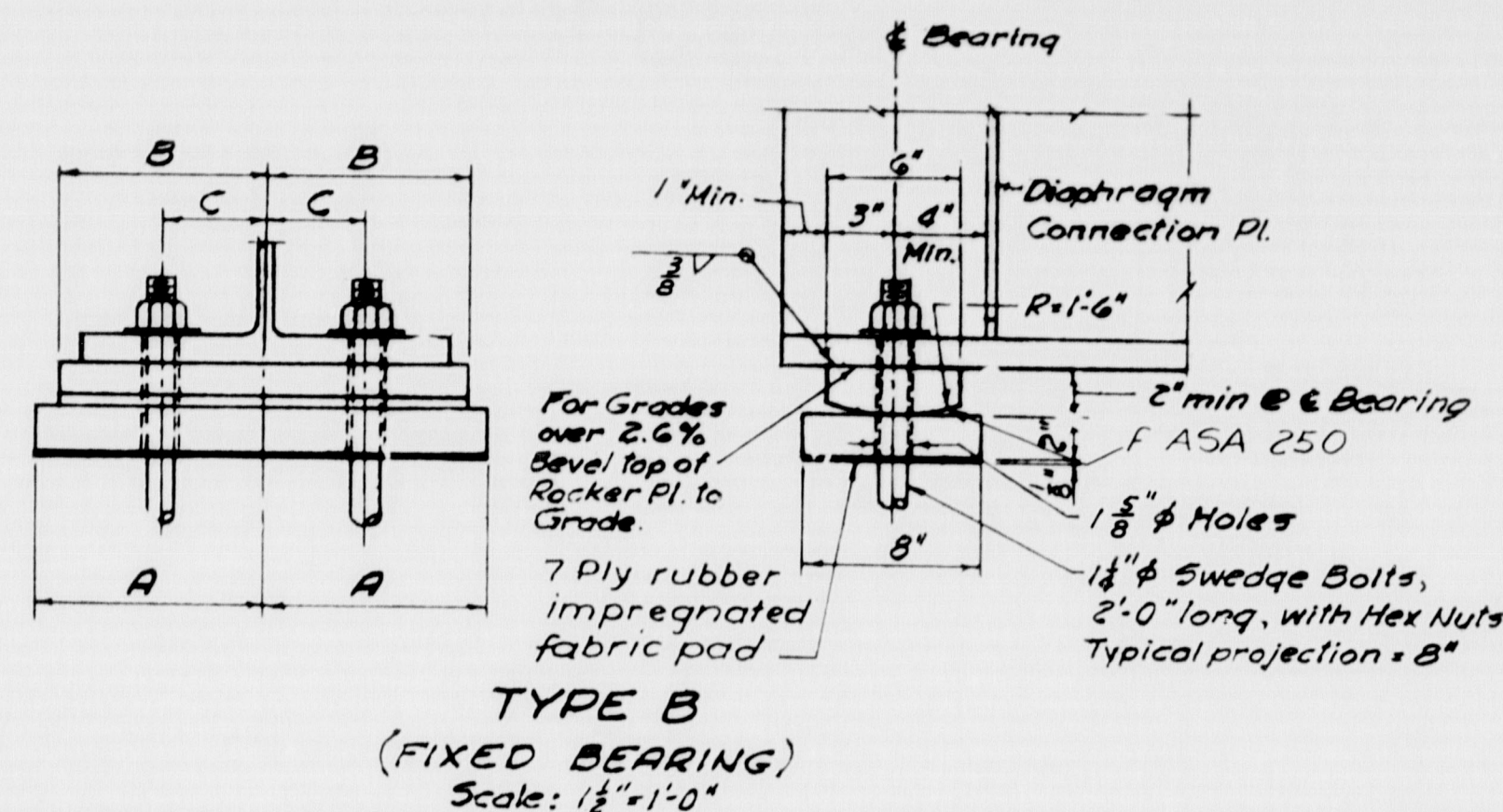
M-1306 FAY, SPOFFORD & THORNDIKE, INC.
ENGINEERS BOSTON, MASS.

Qm-14
370

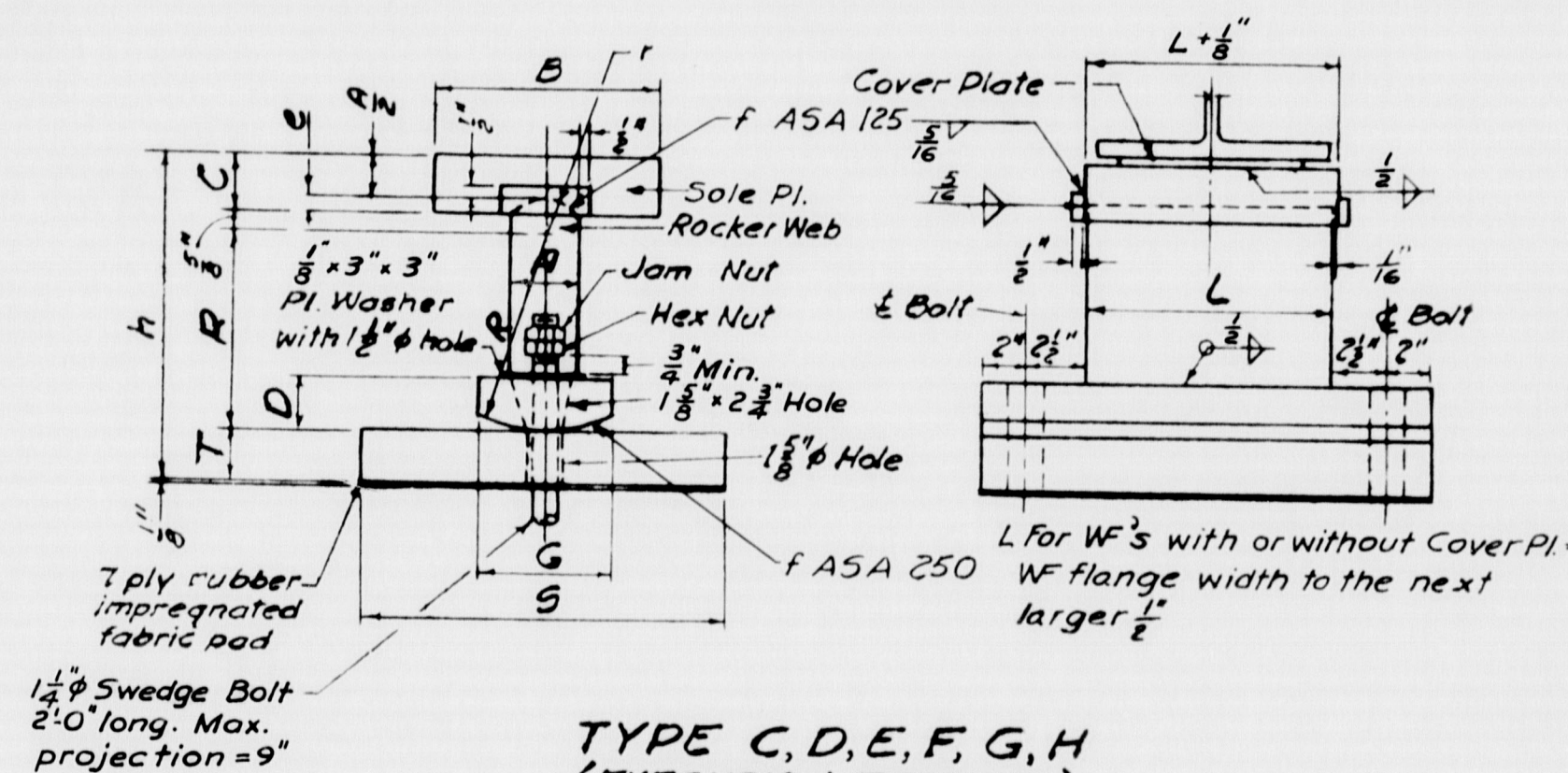
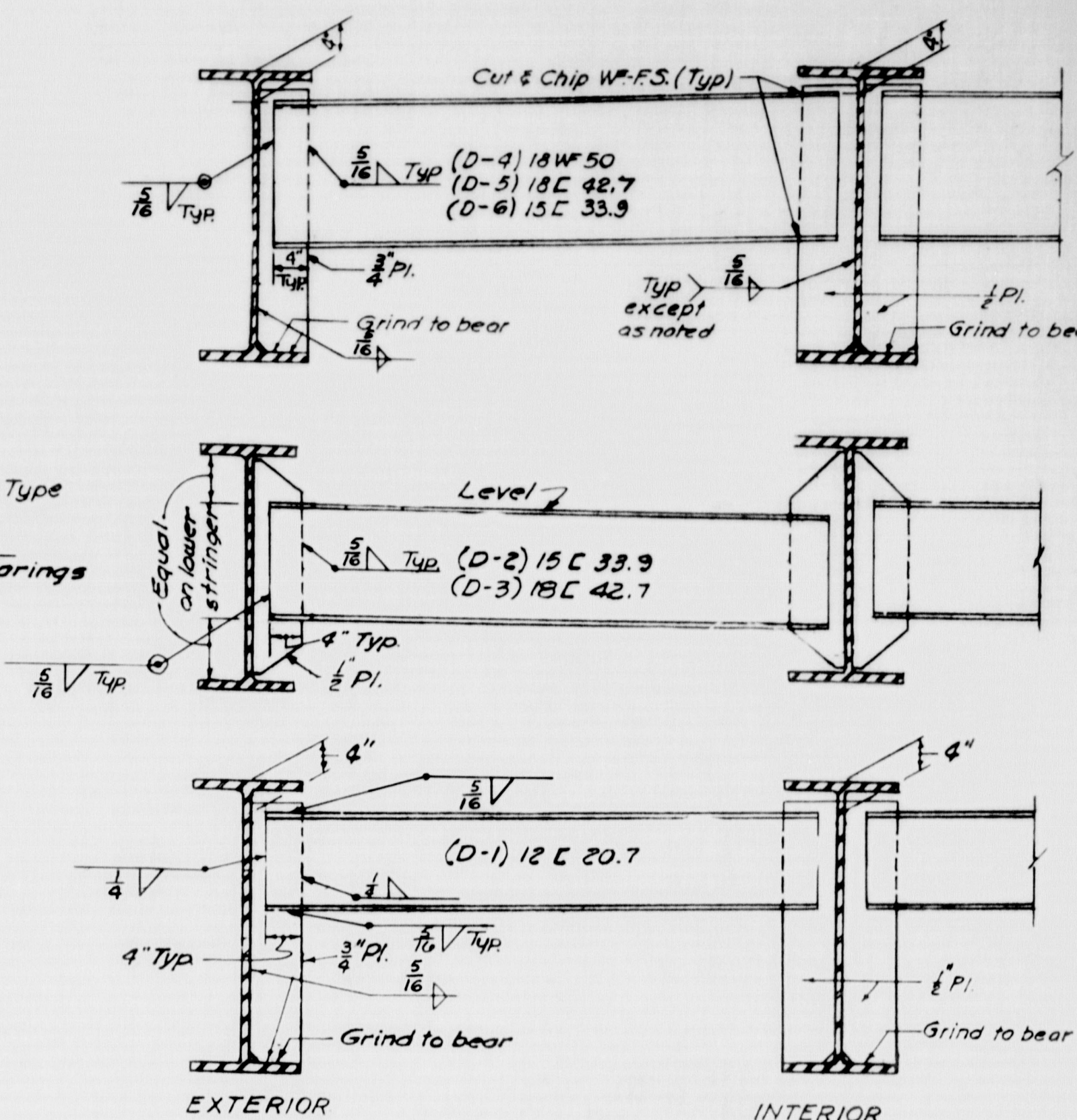
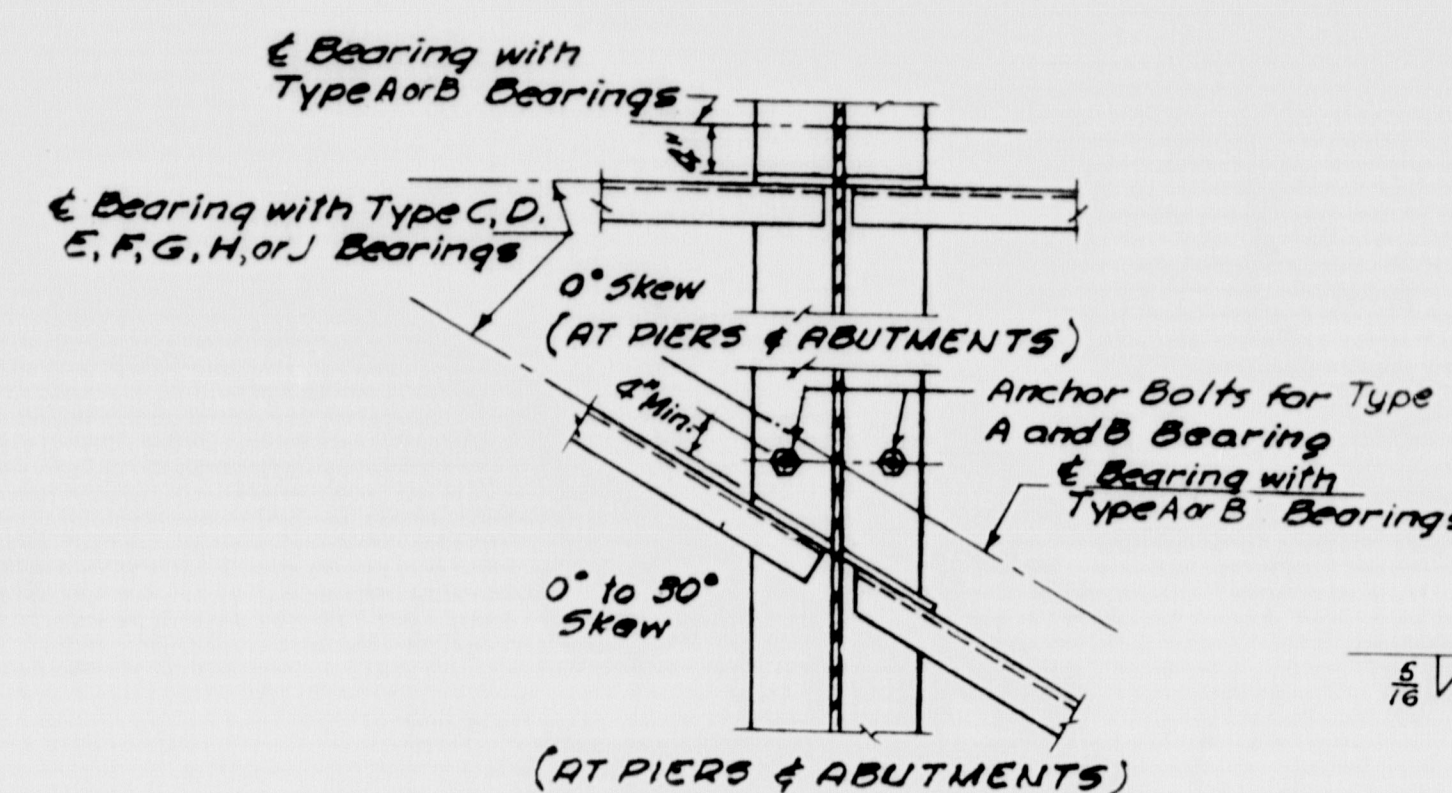
FALMOUTH



FLANGE WIDTH	A	B
16 1/2"	7"	4 1/2"
12"	5"	2 3/4"
11 1/2"	5"	2 3/4"
10 1/2"	4 1/2"	2 3/4"
10"	4 1/2"	2 3/4"
9"	4"	2 3/4"

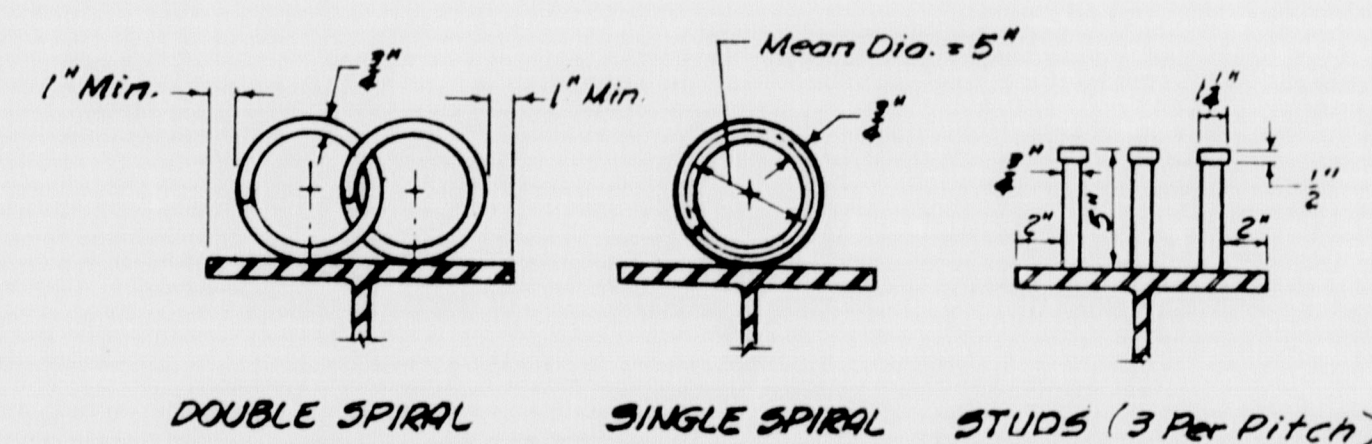
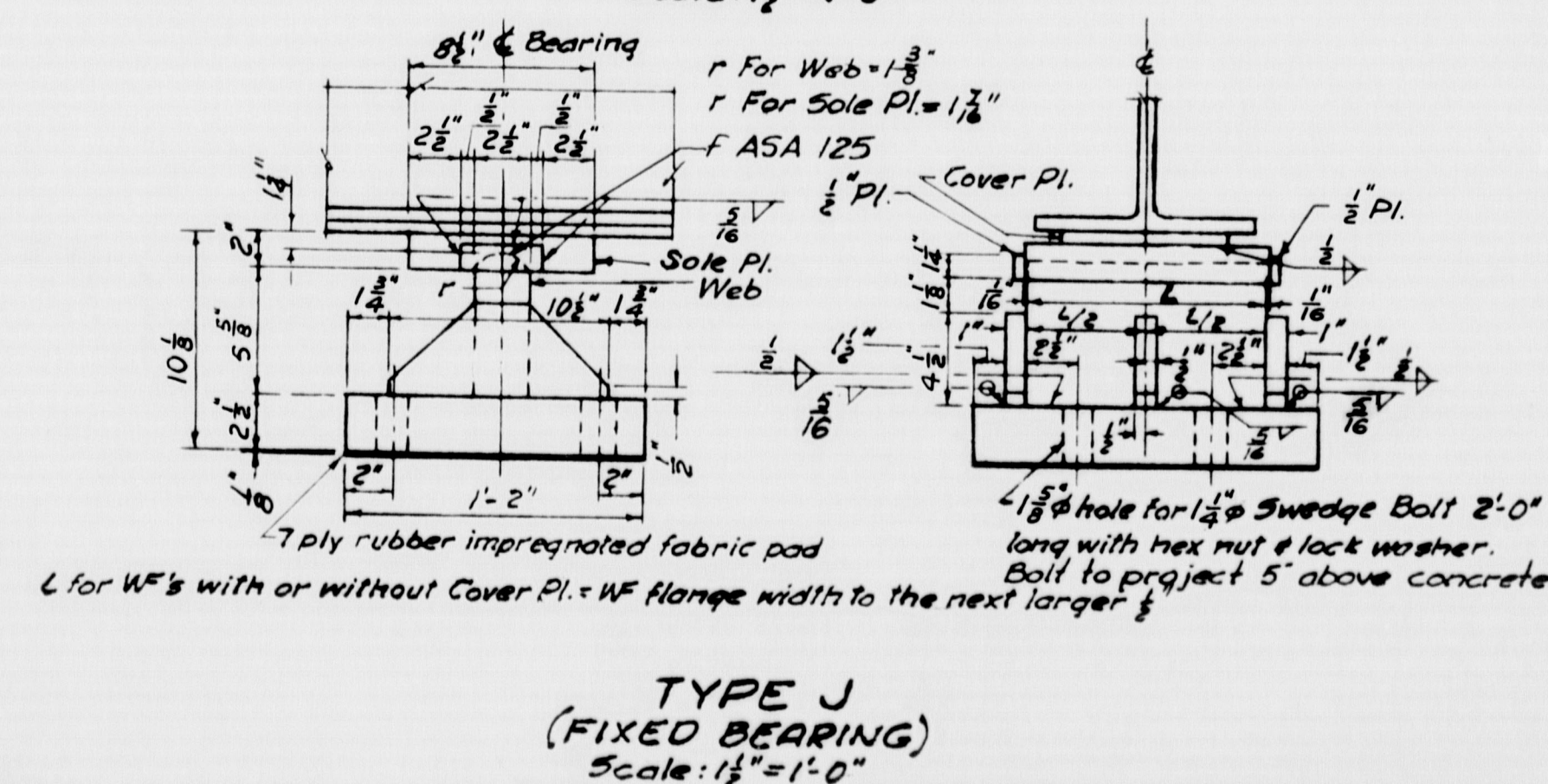


FLANGE WIDTH	A	B	C
16 1/2"	10"	9"	4 1/2"
12"	8"	7"	2 3/4"
11 1/2"	8"	7"	2 3/4"
10 1/2"	7"	6"	2 3/4"
10"	7"	6"	2 3/4"
9"	7"	6"	2 3/4"



BEARING TYPE	DIMENSIONS									
	A	B	C	D	E	G	H	R*	S	T
C	2 1/2"	8 1/2"	2"	2 1/4"	3/4"	6"	10 1/8"	6"	12"	1 1/2"
D	2 1/2"	8 1/2"	2"	2 1/4"	3/4"	6"	11 3/8"	7"	14"	1 3/8"
E	3"	10"	2 1/2"	2 1/4"	1"	6"	13 1/8"	8"	14"	2"
F	3"	10"	2 1/2"	2 1/4"	1"	6"	14 3/8"	9"	16"	2 1/4"
G	3 1/2"	10"	3"	2 3/8"	1 1/4"	7"	16 3/8"	10"	16"	2 3/4"
H	3 1/2"	10"	3"	2 3/8"	1 1/4"	7"	17 3/8"	11"	18"	2 3/4"

r for Sole Plate = $\frac{A}{2} + \frac{3}{16}$ "
r for Rocker Web = $\frac{A}{2} + \frac{1}{8}$ "
* R is rocker radius and is concentric with r for rocker web



SHEAR CONNECTOR DETAILS

Note: Shear Connectors to be used on bridges when called for on "Framing Plan and Details" sheets

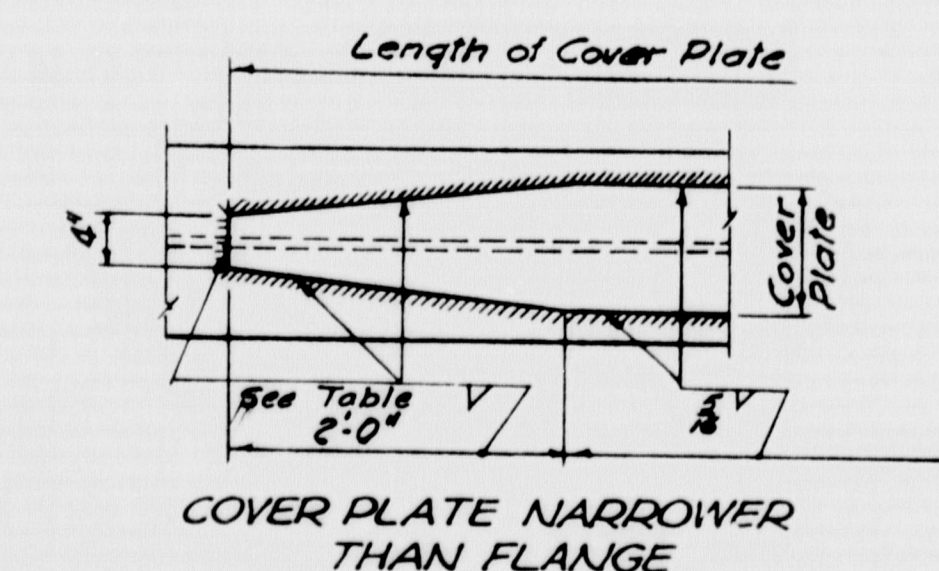


Plate Thickness	Fillet Weld
1/8" to 1/4"	3/16"
1/4" to 1"	1/4"
1 1/8" to 1 1/4"	1/2"

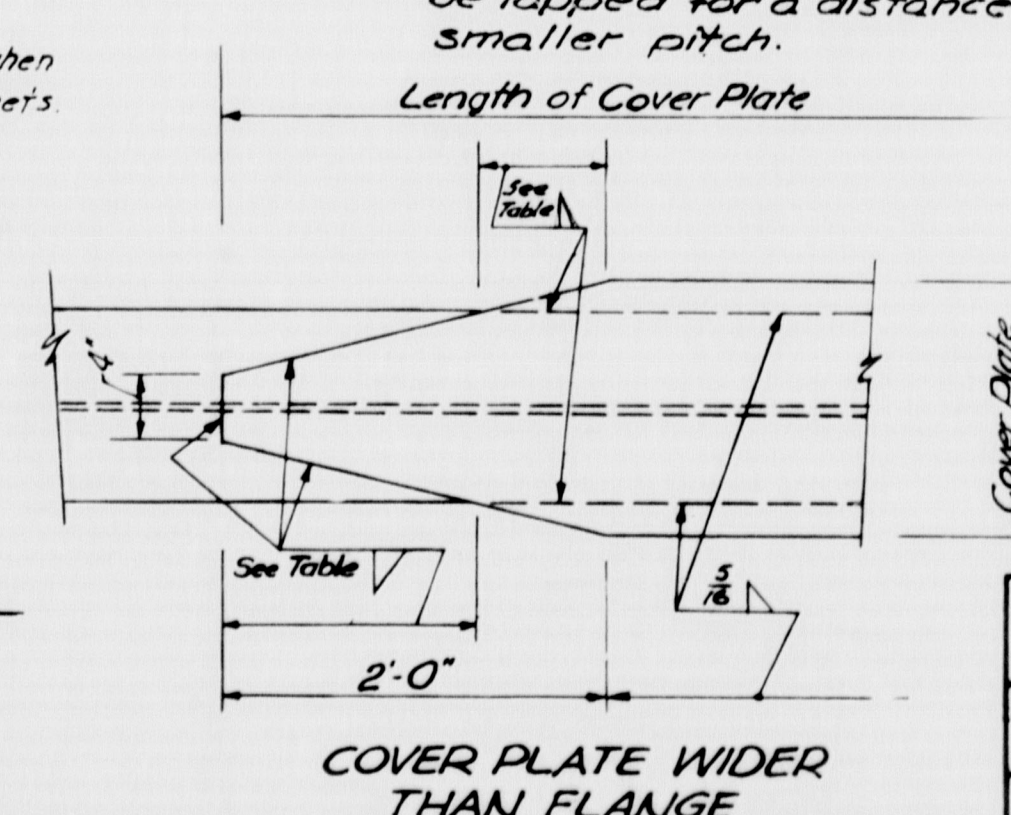


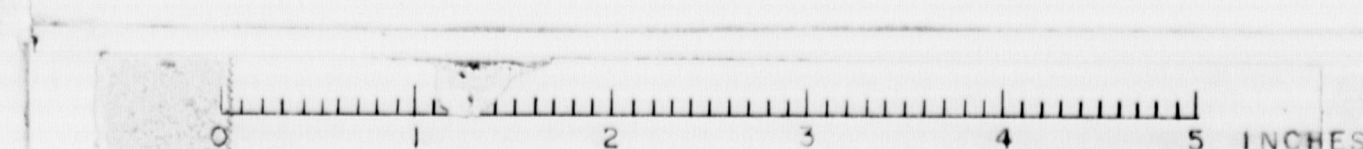
Plate Thickness	Fillet Weld
1/8" to 1/4"	3/16"
1/4" to 1"	1/4"
1 1/8" to 1 1/4"	1/2"

TYPICAL COVER PLATE DETAILS

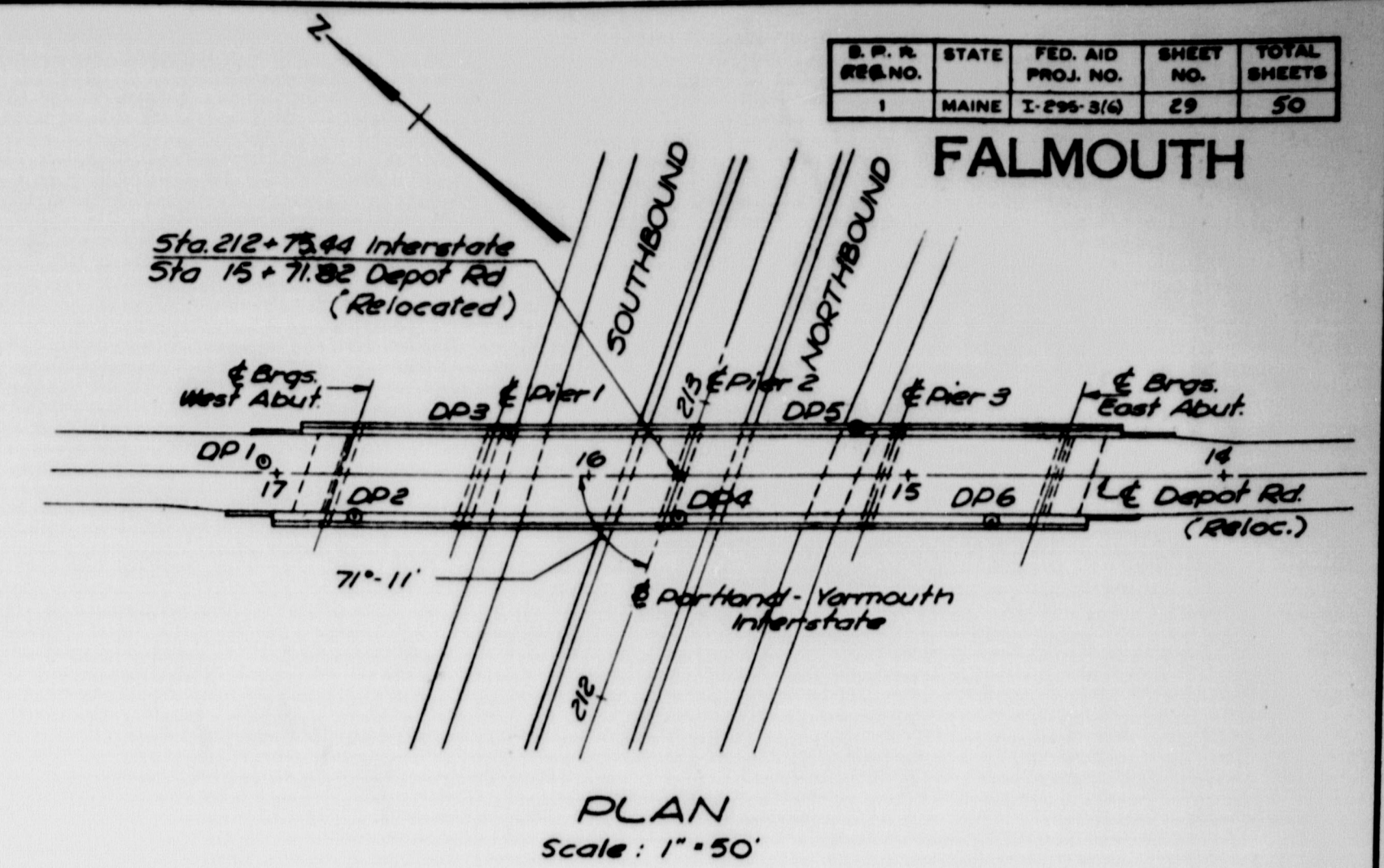
AS BUILT - NO REVISION	
STATE HIGHWAY COMMISSION AUGUSTA, MAINE	
PORTLAND-YARMOUTH INTERSTATE	
DEPOT ROAD RELOCATED OVER INTERSTATE	
STANDARD FRAMING DETAILS	
SHEET NO. 28 OF 30	SCALE: AS NOTED
M-1307	FAY, SPOFFORD & THORNDIKE, INC. ENGINEERS BOSTON, MASS.
Qm-14	371

DES. R.W.B.22
DR. R.B.
IN. R.K.
CHK. R.K.
APP. R.K.

Revised 2/16/50 215-220-4-47



S. P. R. REG. NO.	STATE	FED. AID PROJ. NO.	SHEET NO.	TOTAL SHEETS
1	MAINE	I-295-3(4)	29	50



- GENERAL NOTES
1. BORINGS WERE MADE BY THE MAINE STATE HIGHWAY COMMISSION FEBRUARY & MARCH, 1998
 2. FIGURES IN COLUMN ① - BLOWS PER FOOT ON CASING EXCEPT AS NOTED
FIGURES IN COLUMN ② - BLOWS PER FOOT ON SAMPLER ROD EXCEPT AS NOTED
 3. ELEVATIONS ARE REFERRED TO MEAN SEA LEVEL
 4. ADDITIONAL SOIL INFORMATION OBTAINED FROM LABORATORY TESTS IS AVAILABLE FROM THE MAINE STATE HIGHWAY COMMISSION

LEGEND

- A.5. CASING WAS DRIVEN AFTER SAMPLING
C. = DIAMETER OF CASING IN INCHES
D. = WEIGHT OF HAMMER IN POUNDS
D. DROP ON CASING IN INCHES
D.S. = DROP ON SAMPLER ROD IN INCHES
D.T. = DROP ON TUBES IN INCHES
B.R. =
A.V. =
* = WEIGHT OF ROD
** = WEIGHT OF HAMMER
P = PISTON
f = FAILED

STATE HIGHWAY COMMISSION AUGUSTA, MAINE		
PORTLAND-YARMOUTH INTERSTATE		
DEPOT ROAD RELOCATED OVER INTERSTATE		
BORING DATA		
SHEET NO. 29 OF 50	SCALE: AS NOTED	
M-1308	FAY, SPOFFORD & THORNDIKE, INC. ENGINEERS BOSTON, MASS.	Qm-14 37E

